



Your Visit to Westminster Abbey

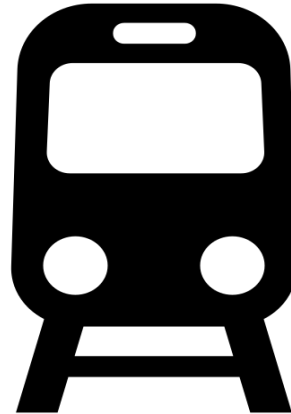
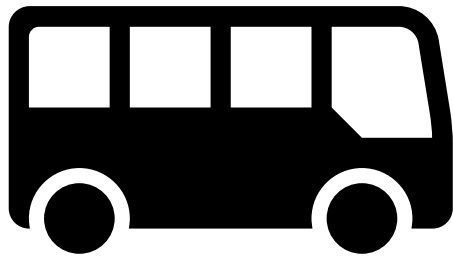
Westminster Abbey



Westminster Abbey is a big church in London.
Everyone is welcome here.



You might travel to Westminster Abbey on a bus, a train, a coach or by walking.



The area around Westminster Abbey can be very loud and busy with people and cars.



When you arrive you will walk around this barrier and through the archway.



You might meet one of our security team, who we call Beadles. They are very nice and can help you find your way.



You will enter through this entrance.
You might have to queue outside.
You will be given a wrist band to wear
during your visit.



There will be members of Abbey staff
here to help you.



You will enter the Abbey through the cloisters. This area can be dark.



There are toilets in the cloisters. You might use these at the start of your visit. There is an accessible toilet here.



Westminster Abbey



Inside the Abbey it might be busy with lots of visitors and people who have come to pray.



Westminster Abbey



The Abbey has very high ceilings.
This can make sounds echo.



Westminster Abbey



Whilst at the Abbey you might hear:

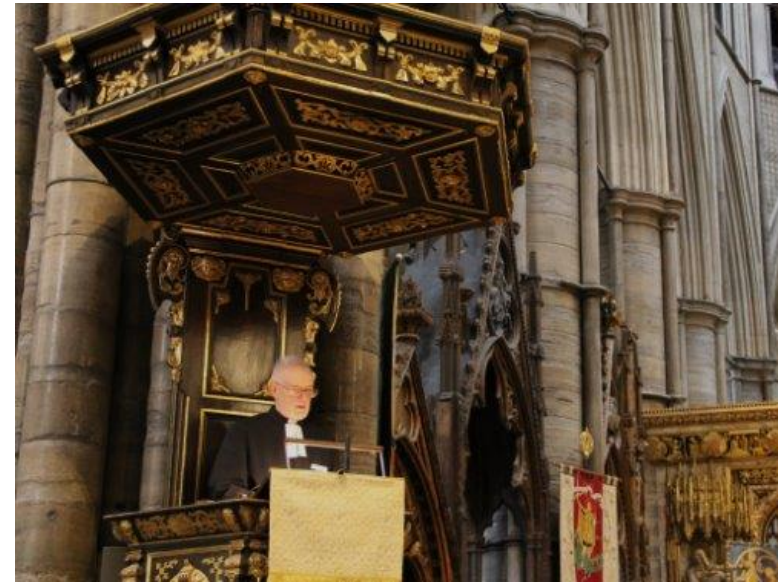
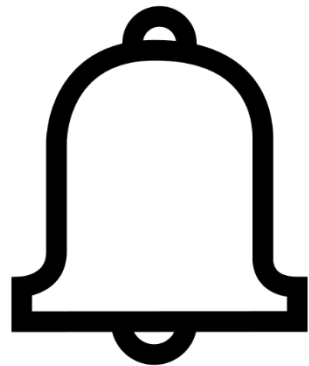
People talking

People saying prayers

Bells ringing

Music playing

People cleaning





Westminster Abbey is a place of burial and remembrance. There are graves, memorials and statues for people all over the Abbey.



You're allowed to walk over the graves and memorials on the floor, except for the one surrounded by poppies.



If you need help during your visit, you could talk to



Vergers



Welcome
Team



Volunteers



Marshals



Chaplains



Beadles
(Security)

If you need a time out or a quiet space during your visit, you could go to



The cloisters

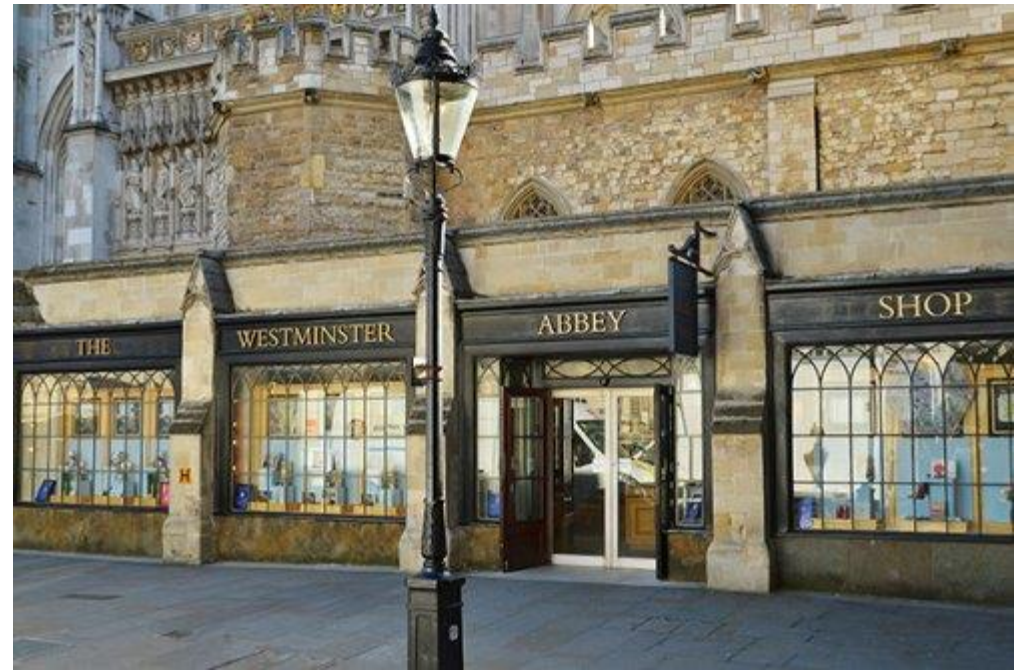


The garden

Westminster Abbey



t the end of your visit you might have lunch in the cloisters or the garden. Or you might visit the shop.



When it is time to go, you will leave through either



The cloisters/group entrance



The great west door



Thank you for visiting Westminster Abbey!



If you require a MS Word version of this visual story or would like to share feedback, please email learning@westminster-abbey.org.
